



## Lauter Screen Removal and Installation



**Premier Stainless Systems, LLC**

**510 Corporate Drive, Suite A**

**Escondido, CA 92029**

**Tel: (760) 7796-7999**

**[www.premierstainless.com](http://www.premierstainless.com)**

**Revised 6-2018**



Step 1



Step 2



Step 3



Step 4

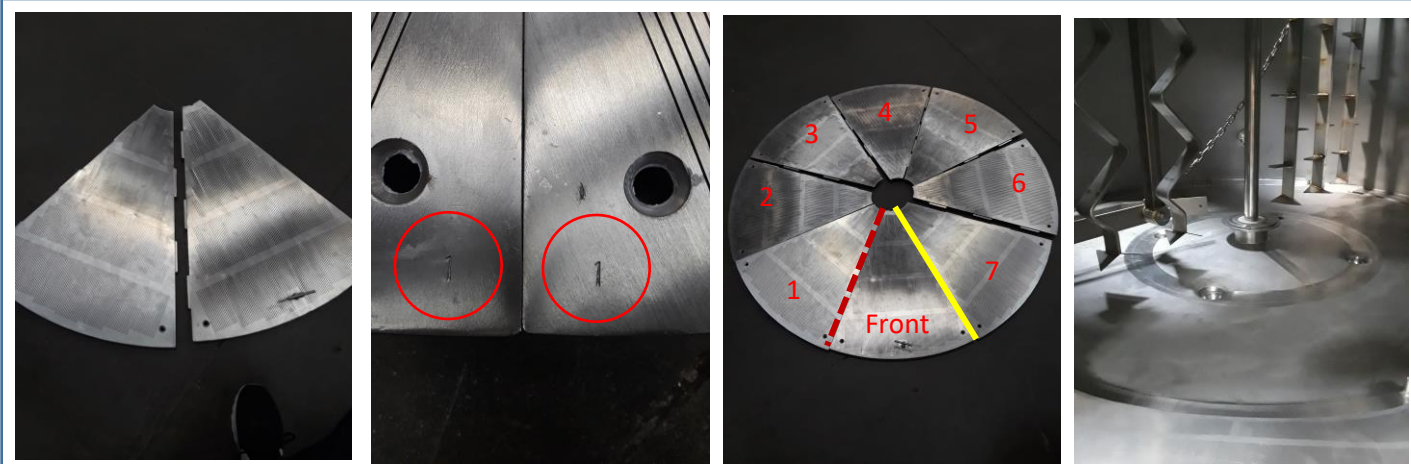
*\*Before starting process, follow your company's "Lock-out, Tag-Out" and Confined Space Entry procedures!\**

1. Locate the Center Screw in the front (in relation to manway door) lauter screen.
2. Using a Philips head screwdriver, remove the screw and ensure it stays in a secure place for re-installation.
3. Tighten lauter screen key into center hole.
4. Take out all screws holding down lauter screens and set them in secure place for re-installation.
5. Holding the lauter screen key, pull up and to the left, as though the screen were attached by a hinge on the left edge. Carefully grab the screen with both hands and separate it from the adjoining left lauter screen. Pulling to the right will ensure you dislocate the interlocking tabs.



Step 5



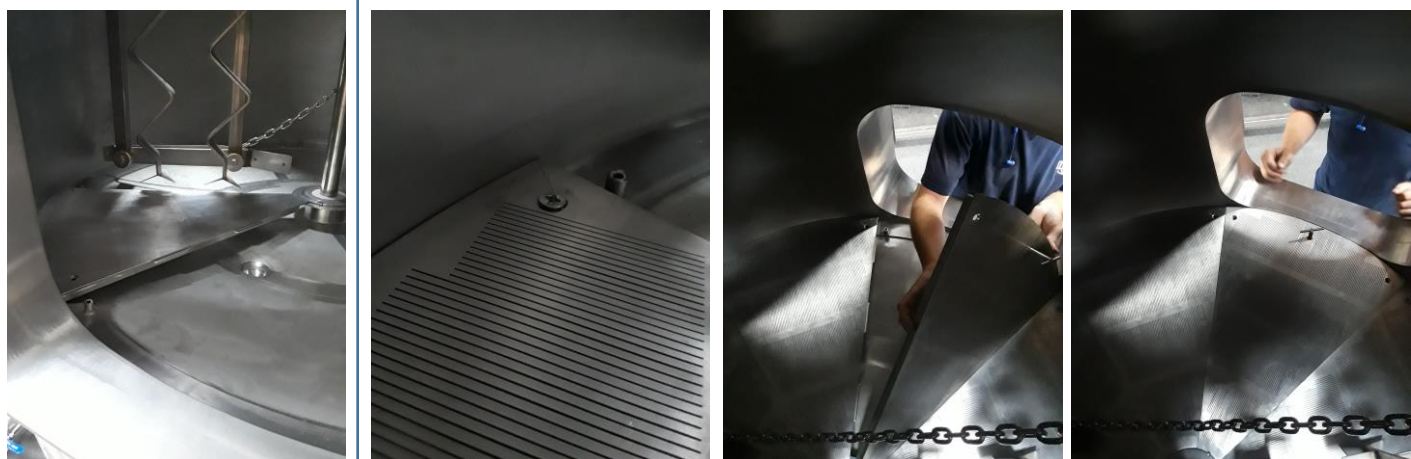


Step 6

6. Place screens in a safe place with no foot (or forklift)-traffic. They can be stacked on top of each other or put in a circle as shown above.

\*\*\*\*While placing the screens, take note of matching numbers in the corner of each screen as this is important for re-installation. Numbers will ALWAYS match each other. (ex. 1-1, 2-2, etc....)\*\*\*\*

7. The “Front” screen that currently includes the lauter screen key is different than the other screens in that only one side has interlocking tabs. Because of this, it is the last screen installed. When re-installing lauter screens, **ALWAYS** start with the screen directly to the left of the “Front” screen. (Noted as screen “1” in above image)
8. Hand tighten both screws in place to secure screens while still allowing them to have play. Repeat step with all screens, using a “hinge-like” motion to interlock tabs, then slowly swinging them down into place, and hand tightening screws. \*\*\*Check that numbers match each other before placing screws!\*\*\*



Step 7

Step 8

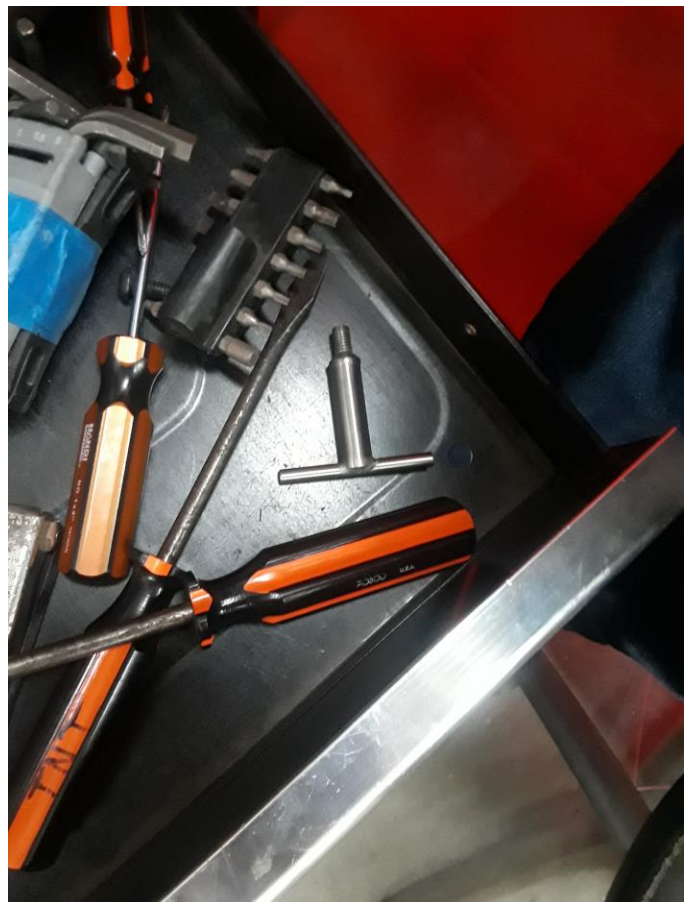


9. Once all screens are in place, go back with a Philips head screwdriver and tighten all screws.
10. Unscrew lauter screen key and replace with place screw. **If left installed, damage to rakes and plow *WILL* happen.**
11. Keep lauter screen Key in safe and easily available place for future use.

**Screens are now fully installed!**



Step 10



Step 11